

X-FOLATE™ plus

PERSISTANT DANDRUFF/ PSORIASIS TREATMENT SHAMPOO

TREATS DANDRUFF, ECZEMA (SEBORRHEIC DERMATITIS) & PSORIASIS



BEAUTERA
PROFESSIONAL

www.beauterapro.com



What is it?

Treatment shampoo for various scalp conditions. Used to help treat persistent dandruff, Eczema(seborrheic dermatitis) and Psoriasis.

What it Does:

- Soothes sensitive, red and/or irritated skin.
- Removes dead cell build-up.
- Controls further cell build-up.
- Safe for color treated hair.
- For a daily treatment of various scalp problems.
- Can be used to help treat Psoriasis, Eczema and Dermatitis.

Key Ingredients:

- **Coal Tar:** Sheds dead skin cells and slows down flaking. It decreases dryness and itchiness.
- **Salicylic Acid:** Removes dead skin cells and bacteria from the skin.

Directions:

Apply X-FOLATE™ plus shampoo to wet hair, massage into hair and scalp, leave on for 2-3 minutes then rinse thoroughly. Use THERARX™ as pre-treatment for persistent scalp problems. Use the THERAPEUTIC™ conditioner after washing the hair and scalp to balance the pH.

Complementary Products:

- THERARX™ Scalp and Skin Wash
- THERAPEUTIC™ Scalp and Hair Treatment Rinse

Sizes Available:

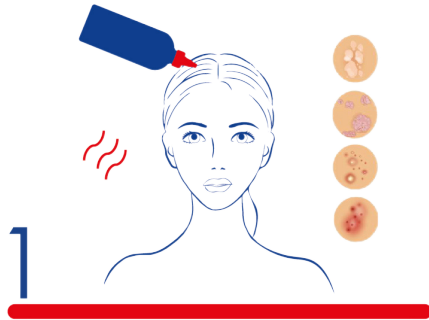
- 250ml / 8.45 FL. OZ. Item #50508 \$13.00 salon
- 1 Liter / 33.8 FL. OZ. Item #50533 \$31.50 salon

Ingredients:

Benzophenone-4, Caprylyl Glycol, Cocamidopropyl Betaine, Dicyldimonium Chloride, Ethylhexyl Methoxycinnamate, Fragrance (Parfum), Hexylene Glycol, Magnesium Chloride, Menthol, Octocrylene, Olea Europea (Olive) Fruit Oil, Panthenol, Phenoxyethanol, Polyquaternium-7, Polyquaternium-10, Polysorbate 80, Salicylic Acid, Sodium Laureth Sulfate, Tocopheryl Acetate, Coal tar, Water (Aqua).

How to use

On dry hair

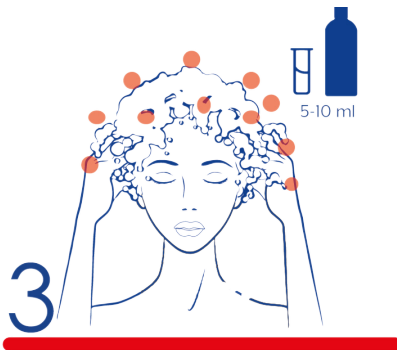


Apply THERARX™ onto the areas of concern.
Massage gently into the scalp.

On dry hair



Allow it to act for 1-2 minutes to neutralize unwanted symptoms.
Do not rinse.



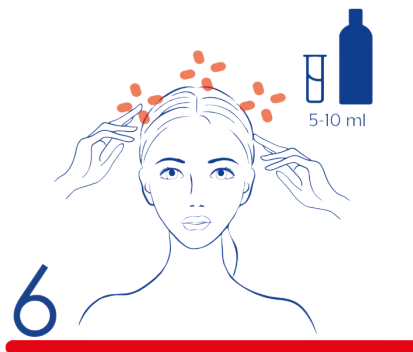
Shampoo with X-FOLATE™ plus.
Leave on for 2-3 minutes.



Rinse hair thoroughly.
If necessary do a second shampoo.



Rinse hair thoroughly and towel dry.



Apply THERAPEUTIC™ with gentle movements onto the scalp.
You will experience a sense of coolness on the scalp.
Leave on for 2-3 minutes.



Rinse hair thoroughly.